

SnowCap at a Glance



Please let your friends and family know how they can help!

Dates to Remember:

May 9 - National Association of Letter Carriers Stamp Out Hunger - Place a bag of nonperishable food next to your mailbox (Gresham, Troutdale, Parkrose, and Rose City Park area). Contact your local post office for more information.

May 30 - Fill-The-Truck Food Drive - Join iHeartMedia, Gresham Toyota and Team SnowCap at Gresham Fred Meyer, 2497 SE Burnside Rd., from 12 pm - 2 pm drop off food donations on a Saturday!

June 6 - Summerplace Shred Day, 9 am-12 pm, 2020 NE 150th Ave. Bring your sensitive material and a suggested donation (\$10 or 10 cans of food) for SnowCap. We will send your papers through the shred truck for safe disposal of your sensitive materials.

September 18 - SnowCap's Annual Sam Wolsborn Memorial Golf Tournament - Tickets are available! Please visit snowcap.org/golf for more information.

September 29 - Panera Dine Out, 4 pm - 8 pm, purchase food at Panera at Gresham Station and mention SnowCap. 20% of net sales will be donated to SnowCap!

Most Needed Items

The dramatic increase in need means that SnowCap is low on all pantry staples. Please consider donating food or hosting a mid-year food drive at your business, church or organization.

We are in particular need of:

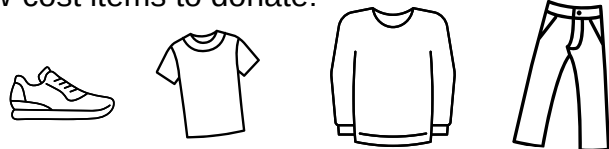
- Hearty soups, chili and stew
- Canned fruit & vegetables
- Packaged snacks
- Shampoo and conditioner
- Baby Wipes
- Quart size zip top bags
- Pet food
- Men's clothing (all types & sizes)
- New underwear and socks (especially boxer briefs for boys/men)
- Cans & bottles with deposit - rinsed please!
- Paper, plastic or reusable bags



It will be time for back to school before we know it!

Help us get a head start on collecting items that are not often donated such as **pants for kids sizes 6x-14, shoes, coats and tops.**

Garage sales, thrift stores and friends who have growing children are wonderful ways to find free or low-cost items to donate!



Save the Date

March 13, 2027 - SnowCap's Annual Auction

*contact imke@snowcap.org at 503-405-4931 for sponsorship opportunities.

Planting a Garden?

Plant an extra row or two for SnowCap this year!



SnowCap

PO Box 160, Fairview, OR 97024

Phone: 503.674.8785

Web: www.SnowCap.org

Email: info@snowcap.org

For donations deliver to 17788 SE Pine St
Monday thru Friday from 9 am to 3 pm